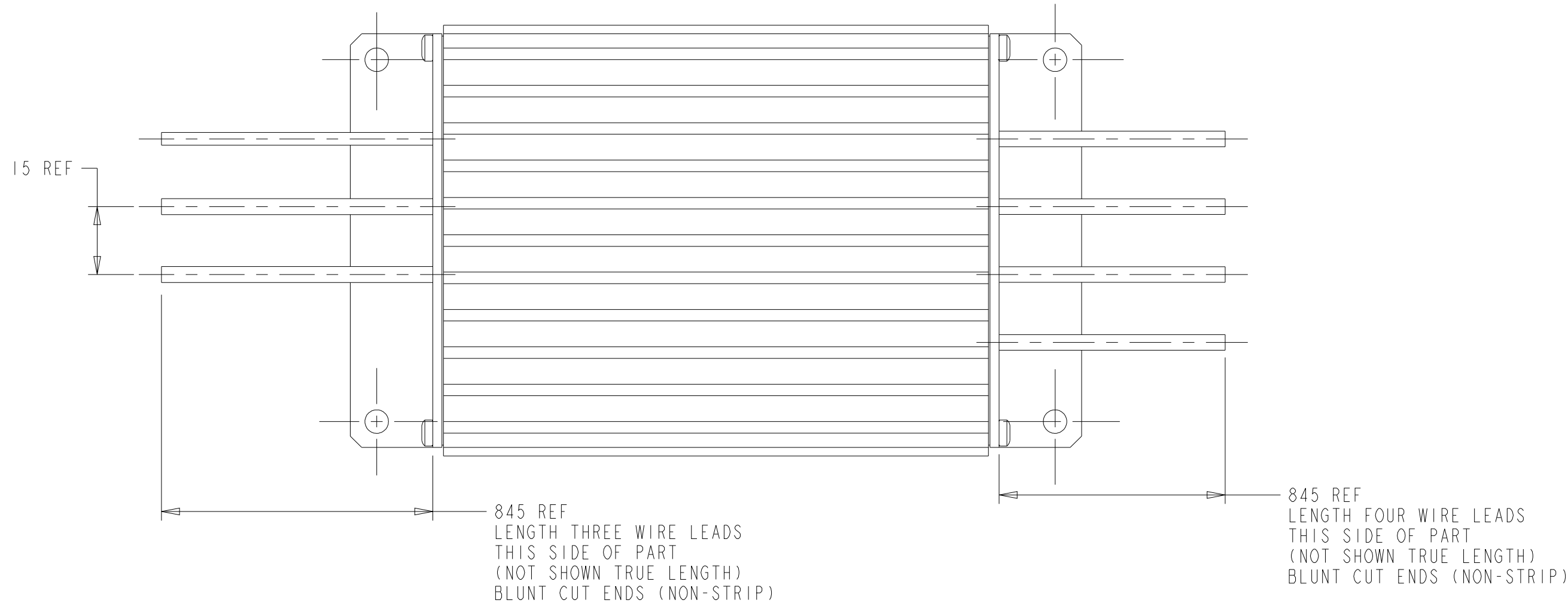
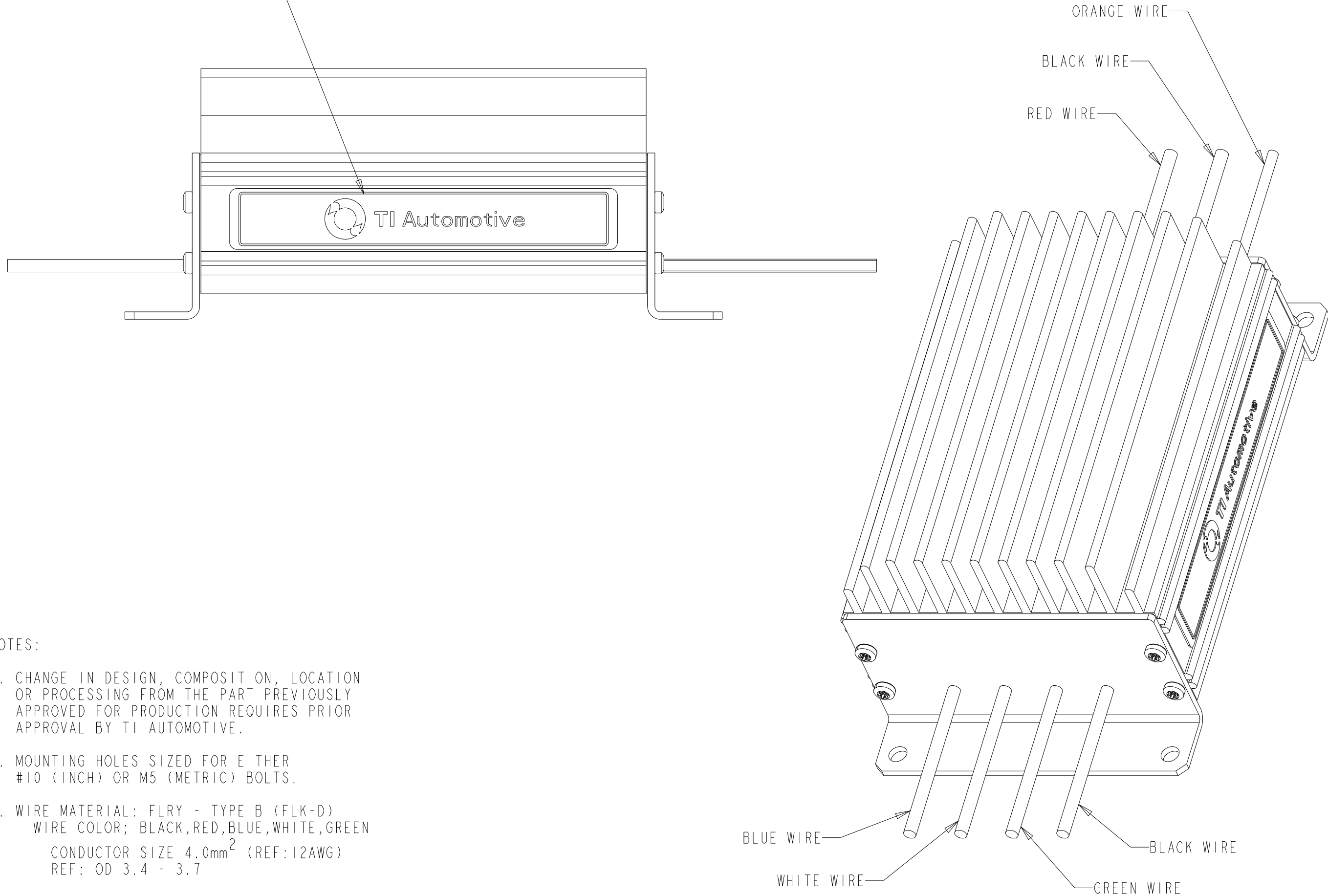
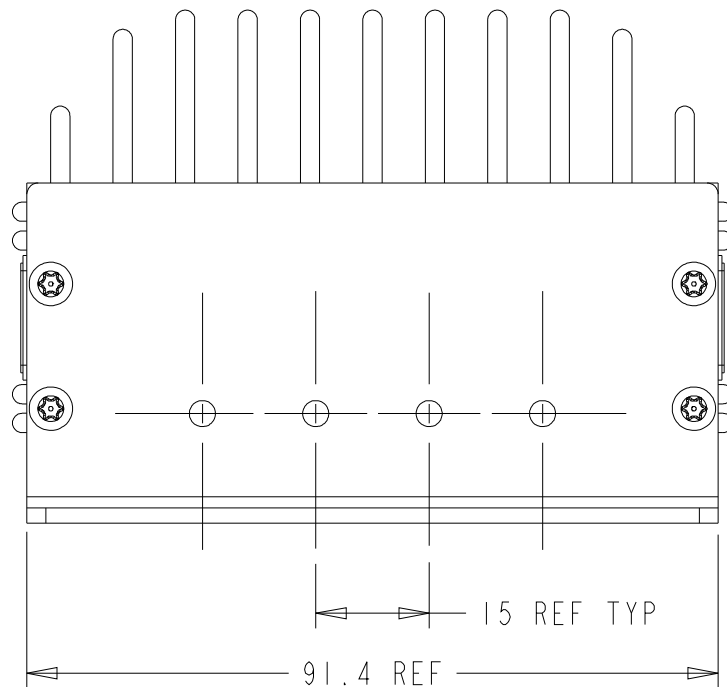
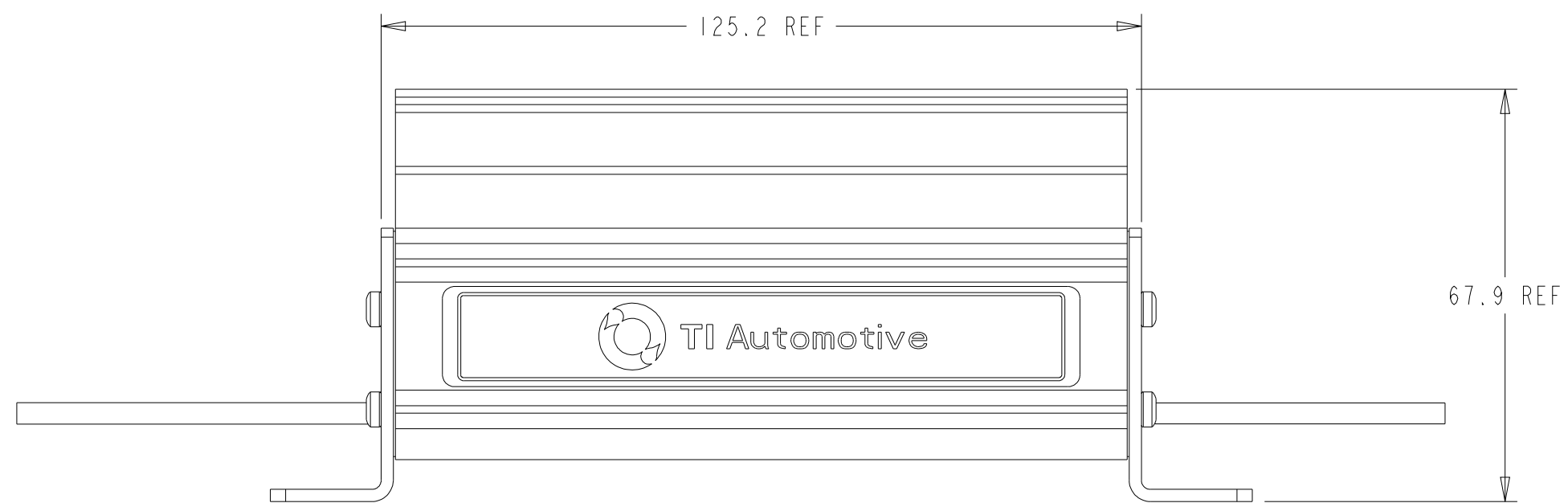


REVISIONS						
ZONE	LTR	DESCRIPTION	CHANGE No	DATE	BY	APPR'D
4-B	AA	INITIAL RELEASE	DR81447	28AUG20	RMB	BLM
4-B	AB	PART NUMBER WAS 000130271/AA	PCRR82224	16OCT20	RMB	BLM
5-B	AC	AC1 SOFTWARE V3.0 WAS V2.0	DR94711	20FEB23	JTK	BLM
4-B		AC2 PART NUMBER EVXC0006ABF00 WAS EVXC0006AAF00				



PERMANENT LABEL, 2 PLACES
LOGO SHOWN ON LABEL FOR REFERENCE ONLY
ACTUAL LOGO MUST MEET BRAND IDENTITY REQUIREMENTS





NOTES:

- CHANGE IN DESIGN, COMPOSITION, LOCATION OR PROCESSING FROM THE PART PREVIOUSLY APPROVED FOR PRODUCTION REQUIRES PRIOR APPROVAL BY TI AUTOMOTIVE.
- MOUNTING HOLES SIZED FOR EITHER #10 (INCH) OR M5 (METRIC) BOLTS.
- WIRE MATERIAL: FLY - TYPE B (FLK-D)
WIRE COLOR: BLACK,RED,BLUE,WHITE,GREEN
CONDUCTOR SIZE 4.0mm² (REF:12AWG)
REF: OD 3.4 - 3.7

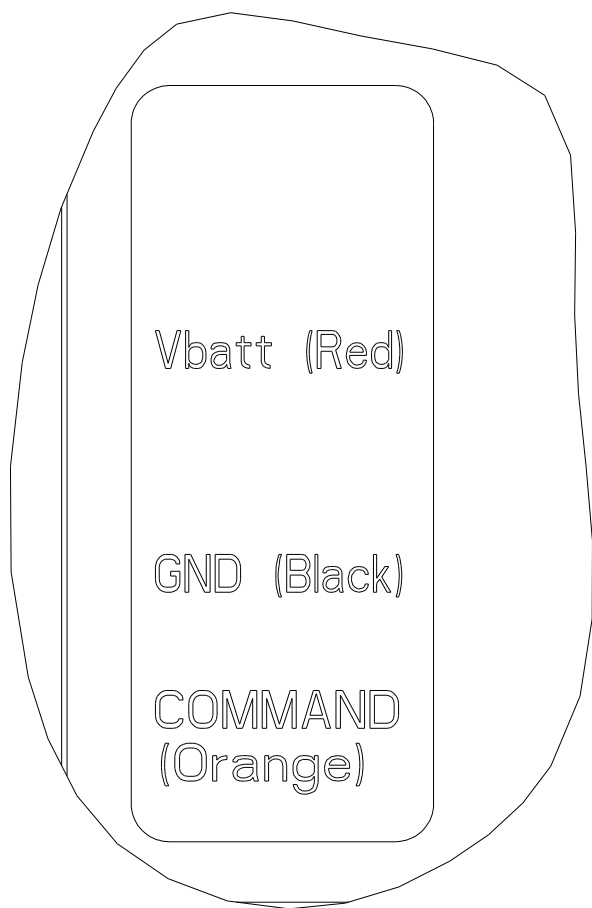
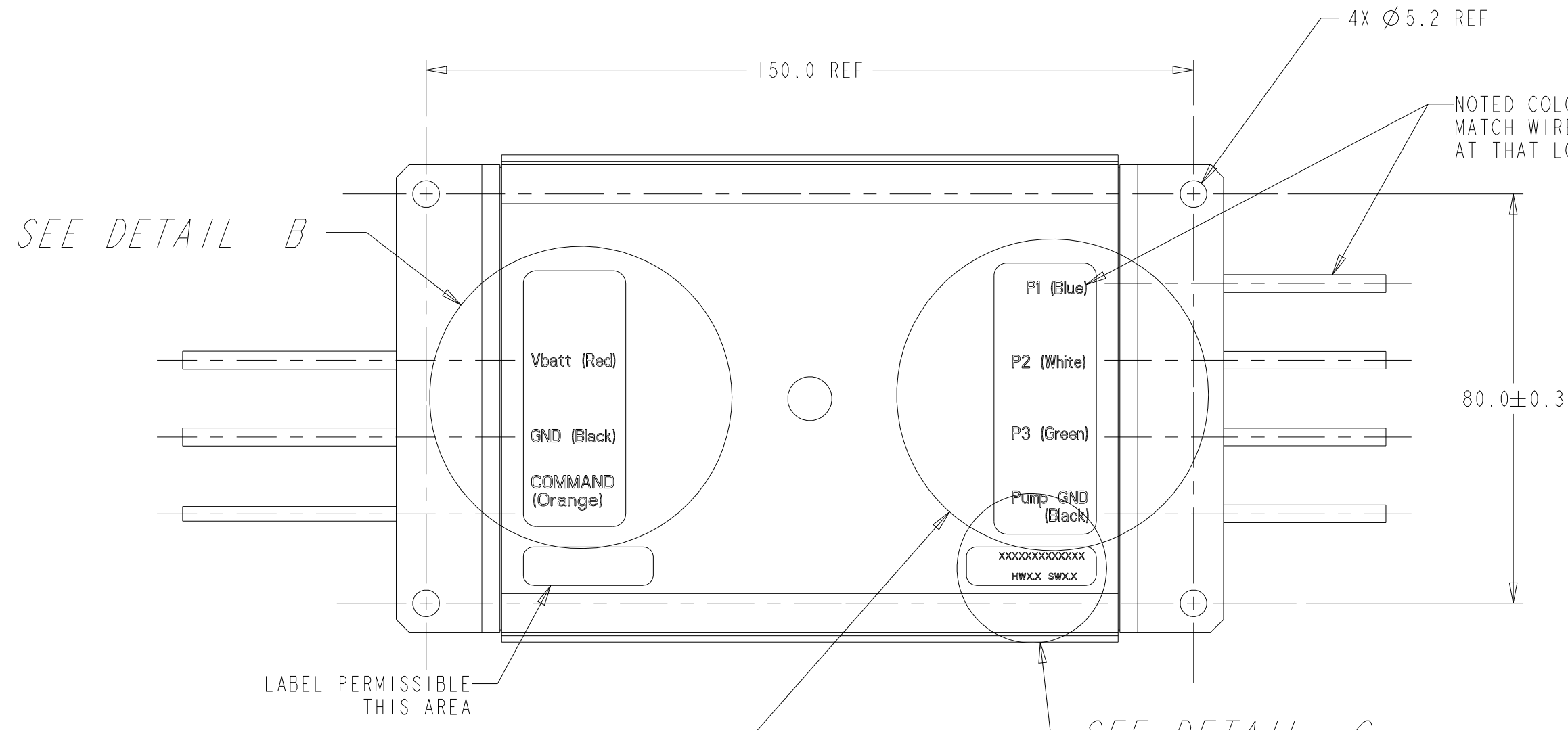
WIRE COLOR: ORANGE
CONDUCTOR SIZE 2.5mm² (REF:14AWG)
REF: OD 2.7 - 3.0
- UNIT MUST MEET FOLLOWING VERSIONS:
(VERSIONS SHOWN IN BOX TO PRINT ON LABEL)
SOFTWARE VERSION: HP_BLDC-[v3.0].hex
HARDWARE VERSION: HP_BLDC-PCB-[v1.3].zip
- 100% FUNCTIONAL TEST, PWM COMMAND FREQUENCY 100 Hz
> WITH UNIT CONNECTED TO PUMP,
RUN FOR 10 SEC AT THE FOLLOWING REQUIREMENTS:
 - 12.5 VDC
 - 400 kPa
 - AMBIENT AIR AND LIQUID TEMP
 - MS 142-66 (SOLVENT) TEST FLUID> PASS/FAIL CRITERIA
 - CONTROLLER SUPPLY CURRENT: 12±1 AMP-DC, WITH COMMAND WIRE OPEN
 - CONTROLLER SUPPLY CURRENT: 8±1 AMP-DC, WITH COMMAND WIRE GROUNDED
- LABEL ARE TO BE PERMANENT WHERE NOTED ON DRAWING.
- FINISHED UNIT TO BE SUPPLIED IN BOX WITH LABEL CONTAINING TI AUTOMOTIVE PART NUMBER. ADDITION OF SUPPLIER PART NUMBER ONLY, IS PERMISSIBLE.

TI AUTOMOTIVE PART NO

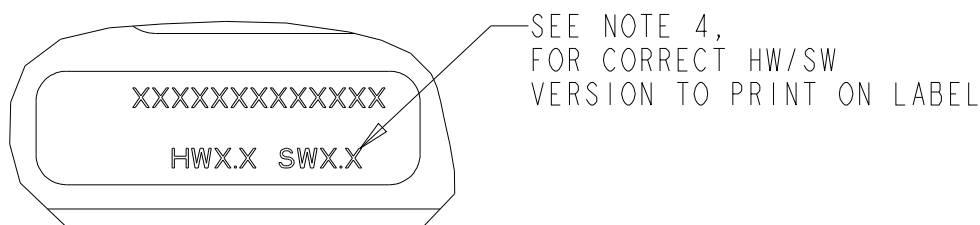
EVXC0006ABF00

METRIC ALL DIMENSIONS ARE IN MILLIMETERS			
DO NOT SCALE			
DECIMAL TOLERANCES UNLESS OTHERWISE SPECIFIED ONE PLACE ±0.25 TWO PLACE ±0.13 ANGLES ±1°			
		THIRD ANGLE PROJECTION	
DIMENSIONS IN ACCORDANCE WITH ASME Y14.5 - 2009			
		630 COLUMBIA ST. CARO, MI 48723 +1 989.673.7727	
TI Automotive			
ENGINEER:	B.MIDDLETON	27AUG2020	MATERIAL/SPECIFICATION: SEE NOTES
DESIGNER:	R.BRUBAKER	27AUG2020	
CAD SYSTEM: PRO/E	SCALE: 1:1	SHEET NO. 1 OF 1	
REFERENCE 10/REV.: 000130271/AB		20 PLW REFERENCE/REV.: AR0060495/AC	
REFERENCE 10/REV.:		30 PLW REFERENCE/REV.: AR0060494/AC	
DRAWING NAME: CONTROLLER / BRUSHLESS PUMP (PWM)			
SIZE: A1		DRAWING NUMBER: AR0060495	

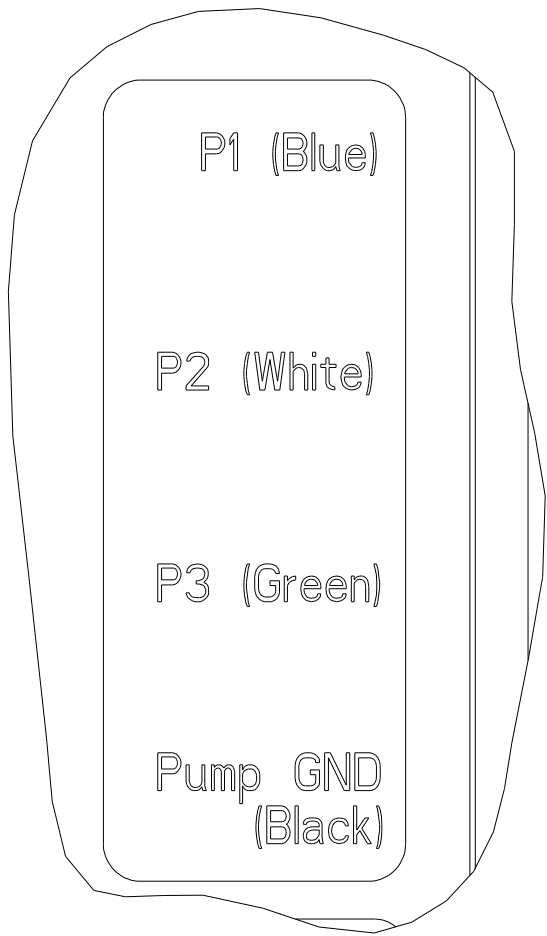
KEY PRODUCT CHARACTERISTICS		
REFER TO TI AUTOMOTIVE GLOBAL ADVANCED QUALITY PLANNING DOCUMENT # FTD5-P1-P-021 FOR THE CLASSIFICATION AND CONTROL OF KEY PRODUCT CHARACTERISTICS	TOTAL ON SHEET	DRAWING
▽ - SAFETY CHARACTERISTIC	--	--
◇ - CRITICAL CHARACTERISTIC	--	--
◆ - HIGH IMPACT CHARACTERISTIC	--	--
THIS DRAWING IS PROPERTY OF TI AUTOMOTIVE. TI AUTOMOTIVE CLAIMS PROPRIETARY RIGHTS IN THE SUBJECT MATTER SHOWN AND DESCRIBED ON THIS DRAWING AND RETAINS ALL INTELLECTUAL PROPERTY RIGHTS. THE DRAWING IS PROVIDED FOR REFERENCE PURPOSES ONLY AND ON THE EXPRESS CONDITION THAT IT WILL BE HELD IN CONFIDENCE. THIS DRAWING SHALL NOT BE DISCLOSED TO OTHERS OR USED FOR THE PURPOSE OF MANUFACTURE BY OR PROCUREMENT FROM OTHERS OF THE ARTICLE OR PART SHOWN WITHOUT TI AUTOMOTIVE'S EXPRESS WRITTEN CONSENT. NO LICENSE OR OTHER RIGHT IS GIVEN OR IMPLIED BY THE PROVISION OF THIS DRAWING TO RECIPIENT. COPYRIGHT, TI AUTOMOTIVE 2010, ALL RIGHTS RESERVED.		



DETAIL B
THREE WIRE LABEL
SCALE 2:1



DETAIL C
PERMANENT LABEL
(MIN INFO TO BE PRINTED)
TI AUTO PART NUMBER
HARDWARE/SOFTWARE VERSION
SCALE 2:1



DETAIL A
FOUR WIRE LABEL
SCALE 2:1